

The LAGUNA

24022 Calle de la Plata

Laguna Hills, CA



Proudly Owned By:

MERIDIAN
Buildings for Life

HEALTHCARE ADVISORY

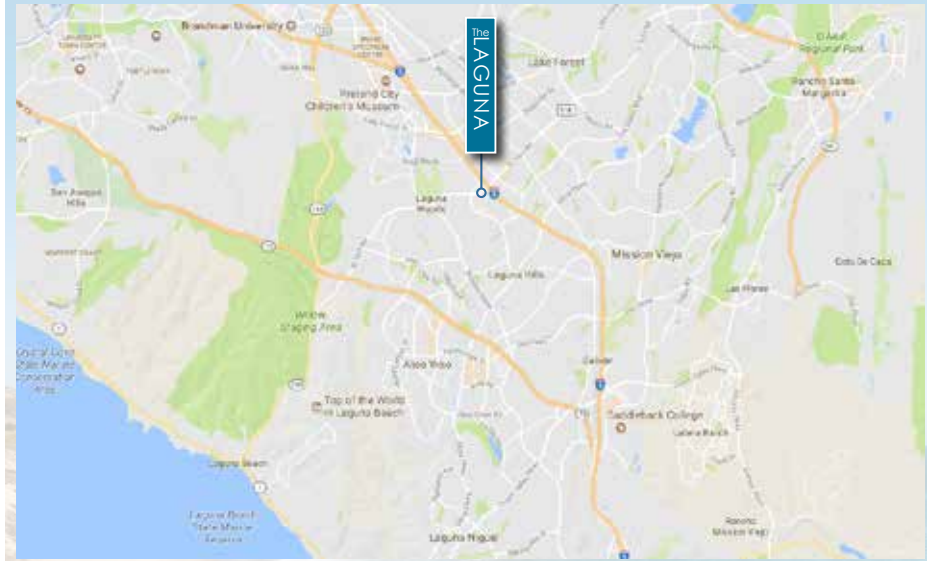
JOHN SCRUGGS

CA RE Lic. #01796826
949.608.2102
jscruggs@ngkf.com

RYAN CLARK

CA RE Lic. #01313065
949.608.2058
rclark@ngkf.com



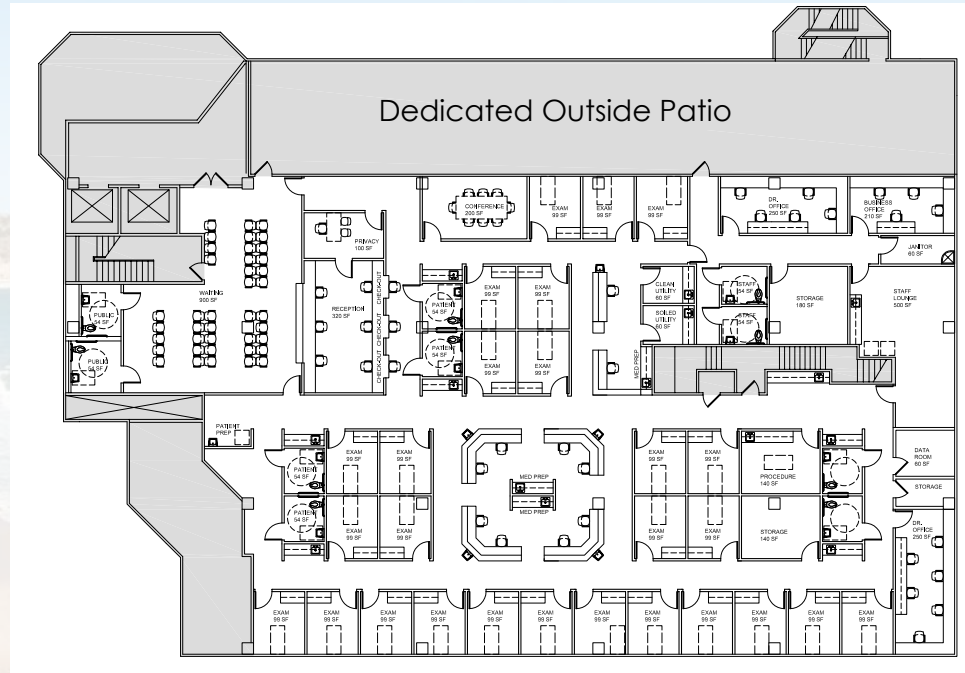


FEATURES

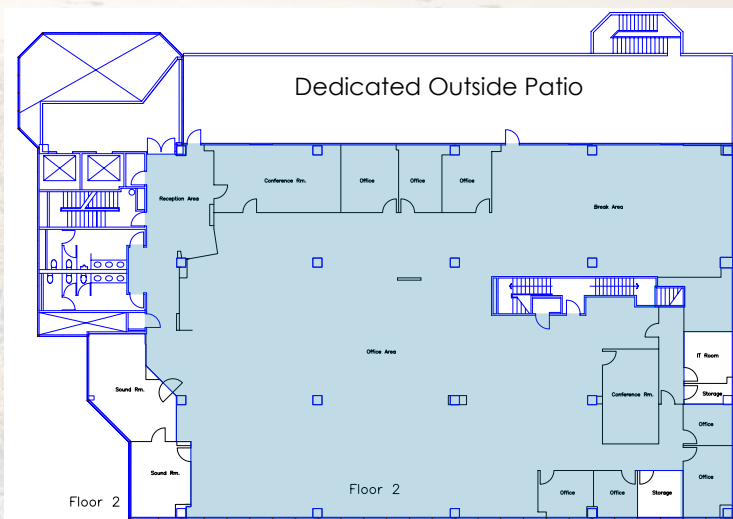
- Extensive common area remodel recently completed
- 57,057 SF Class A on-campus medical office building
- Adjacent to Saddleback Memorial Medical Center-Regional Hospital (325 beds)
- Full floor plate with external patio and flexible layout opportunities.
- Immediate access to the 5 and 405 freeways
- Surrounding retail, restaurants, and entertainment including the new Five Lagunas - an indoor-outdoor shopping

FLOOR PLANS

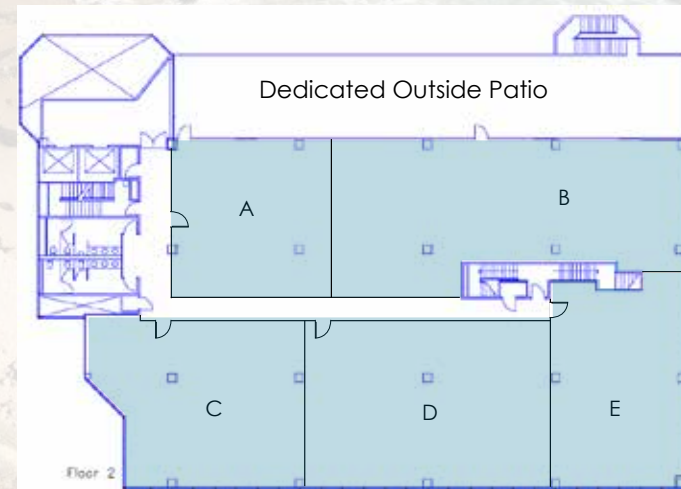
FLOOR 2 | CONCEPTUAL 2ND FLOOR PLAN



FLOOR 2 | SUITE 200 | 12,300 SF (DIVISIBLE)

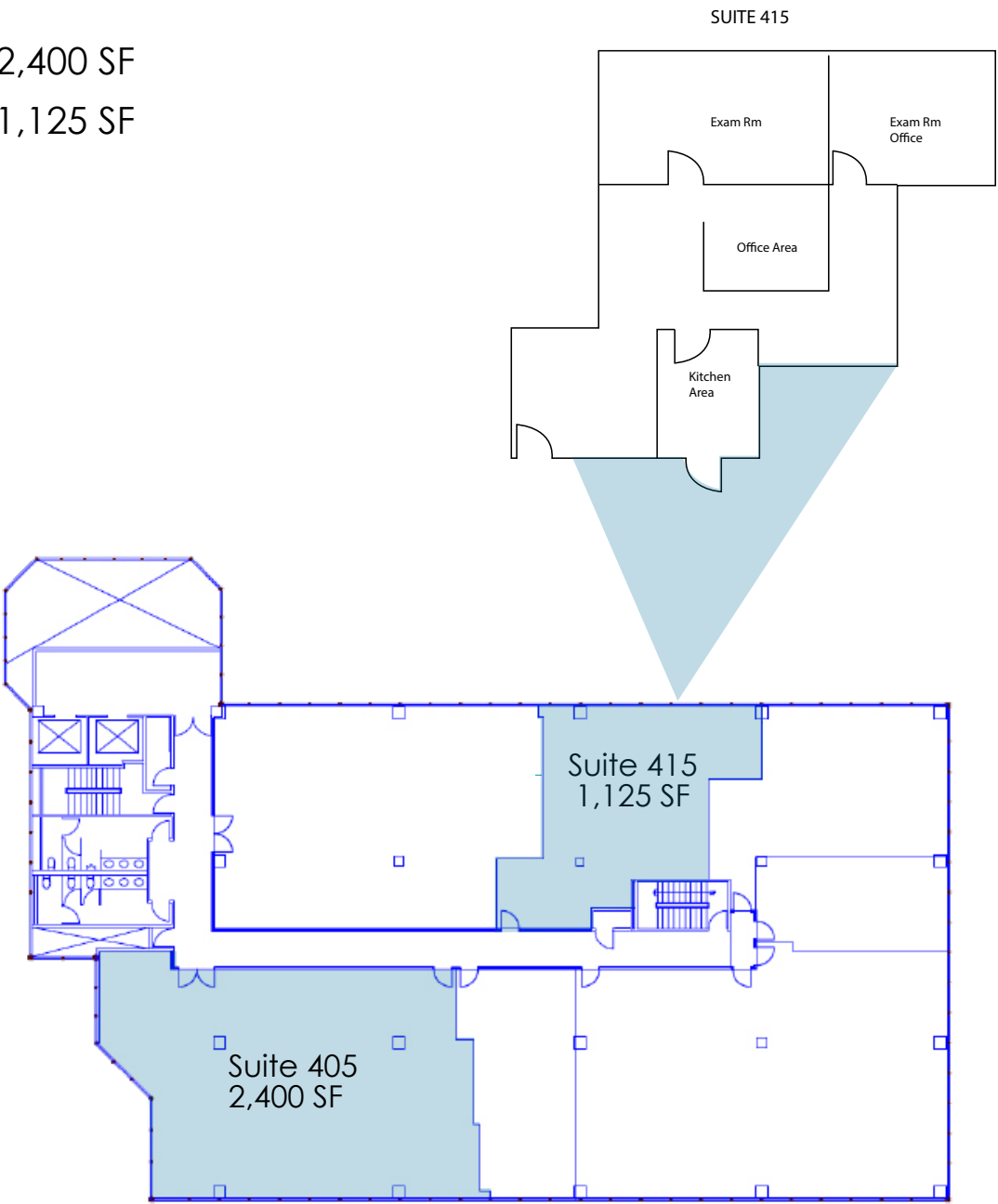


FLOOR 2 | SUITE 200 | 12,300 SF
(CONCEPTUAL DEMISING PLAN)



FLOOR PLANS

FLOOR 4 | SUITE 405 | 2,400 SF
SUITE 415 | 1,125 SF





FIVE
LAGUNAS

The
LAGUNA



El Toro Road

Paseo De Valencia

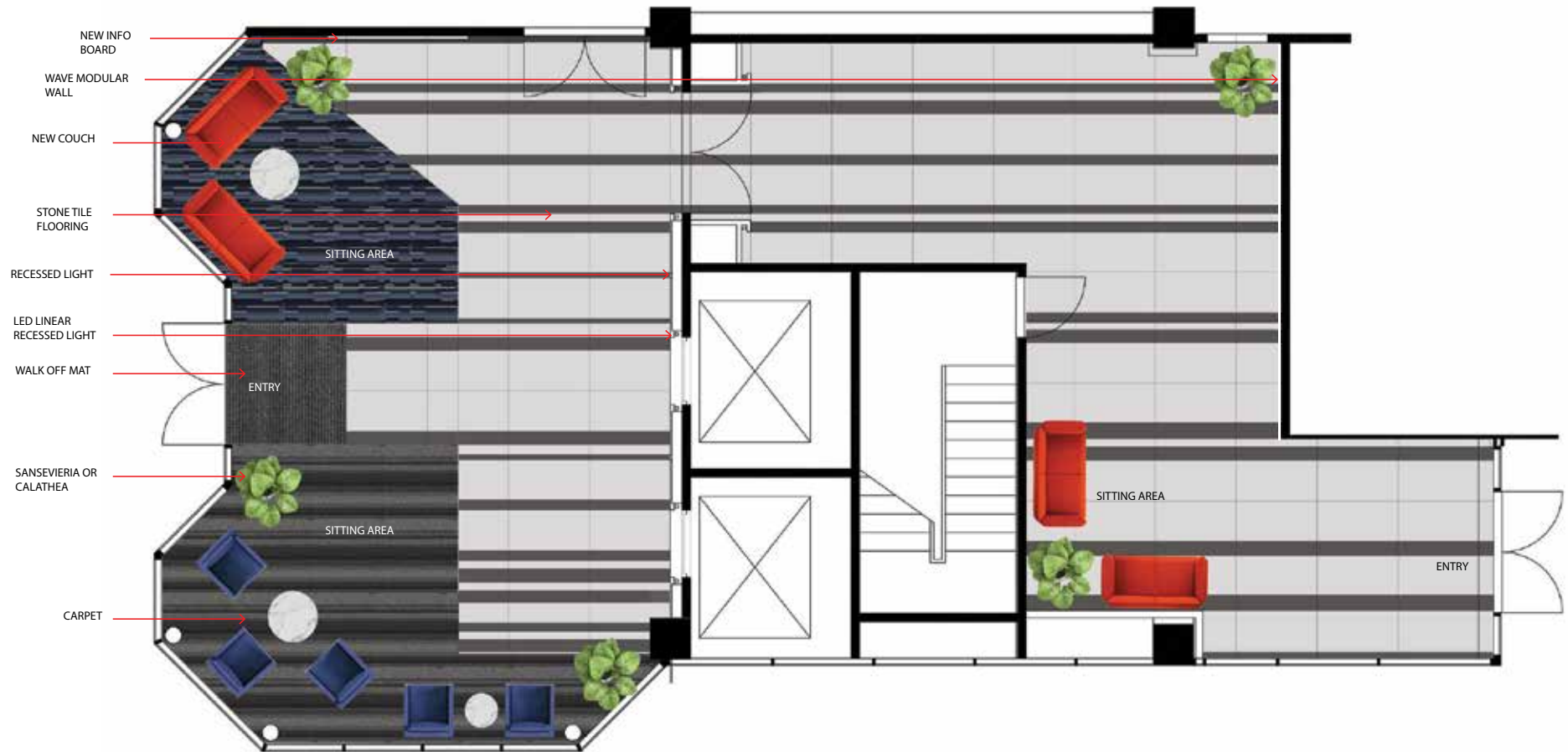
RENDERING PATIO SITE



LOBBY UPGRADES



LOBBY UPGRADES



ENLARGED PROPOSED LOBBY FLOOR PLAN

FIVE LAGUNAS

"Five Lagunas" (currently known as Laguna Hills Mall) is to be redeveloped at the intersection of I-5 and El Toro Road in Laguna Hills. Existing anchor stores include Macy's, JC Penney and Nordstrom Rack. ICON Theatres operate a 75,000 square foot - 14 screen luxury movie theatre. Additional anchor stores to be announced.

The center will be redeveloped with a proposed completion in mid-2018. The project will be rebranded as "Five Lagunas", which signifies the 5 Laguna communities within the trade area. The former Sears store, along with the central and south side of the mall will be demolished. The north end of the mall will be refurbished and upgraded for a new mix of retail stores. The south end of the property will be redeveloped as an outdoor retail area with luxury theatres, new anchor stores, retail shops, restaurants and redeveloped common areas. In addition, approximately 980 apartment units will be developed on the south end of the site.



Proposed Development:

1. Retail-lined Promenade
2. Restaurants at the Park
3. Cinema over Retail
4. The Apartments at Five Lagunas
5. Retail Anchors

HEALTHCARE ADVISORY

JOHN SCRUGGS

CA RE Lic. #01796826
949.608.2102
jscruggs@ngkf.com

RYAN CLARK

CA RE Lic. #01313065
949.608.2058
rclark@ngkf.com



4675 MacArthur Court, Suite 1600, Newport Beach, CA 92660 (Corporate CA RE #01355491)

Procuring broker shall only be entitled to a commission, calculated in accordance with the rates approved by our principal only if such procuring broker executes a brokerage agreement acceptable to us and our principal and the conditions as set forth in the brokerage agreement are fully and unconditionally satisfied. Although all information furnished regarding property for sale, rental, or financing is from sources deemed reliable, such information has not been verified and no express representation is made nor is any to be implied as to the accuracy thereof and it is submitted subject to errors, omissions, change of price, rental or other conditions, prior sale, lease or financing, or withdrawal without notice and to any special conditions imposed by our principal.